

The academic performance of Mexican youth considering migration to US

Bryant Jensen (Brigham Young University)

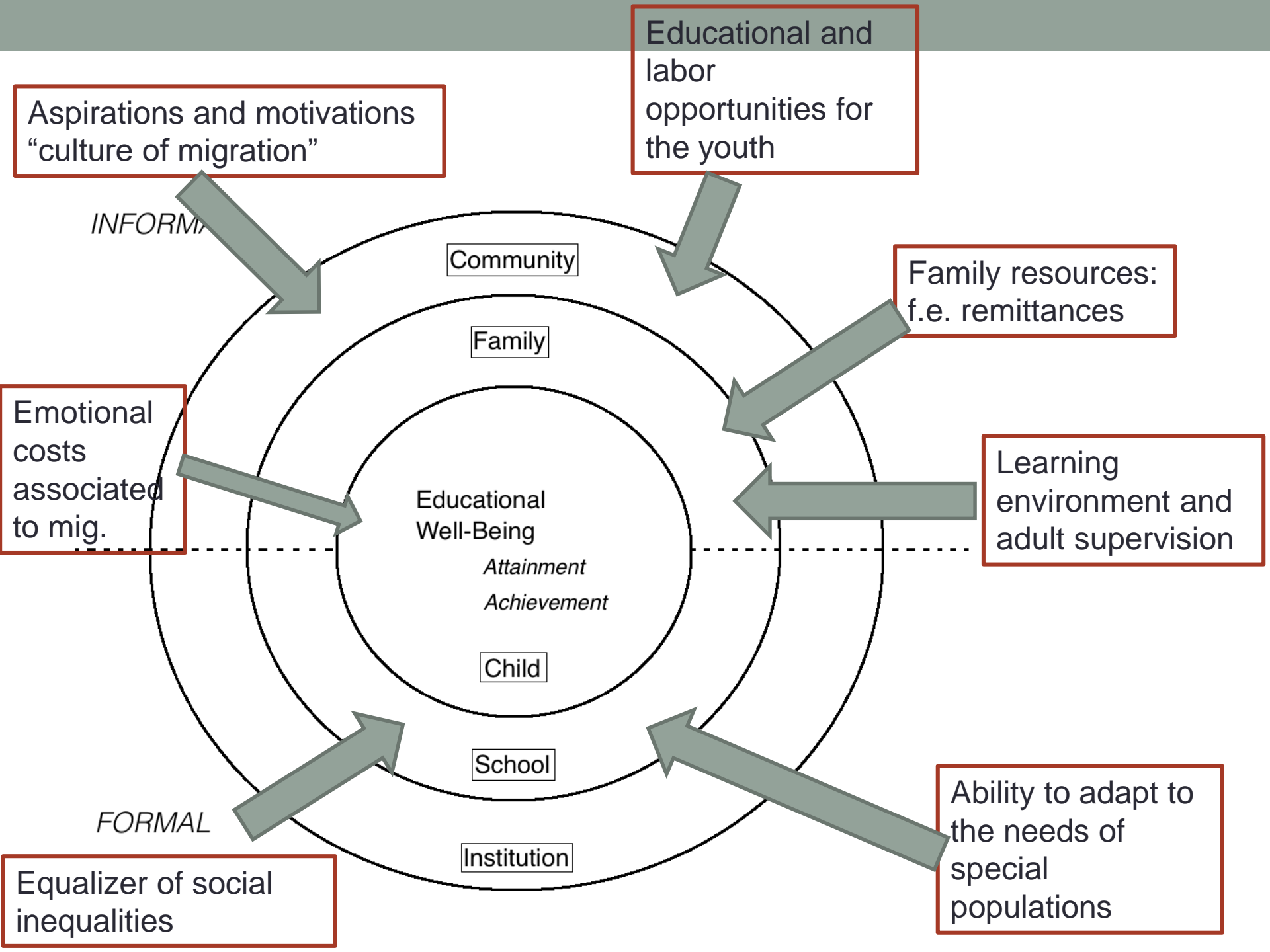
Silvia E. Giorguli (El Colegio de México)

*Eduardo Hernández (Universidad Autónoma del
Estado de Morelos)*

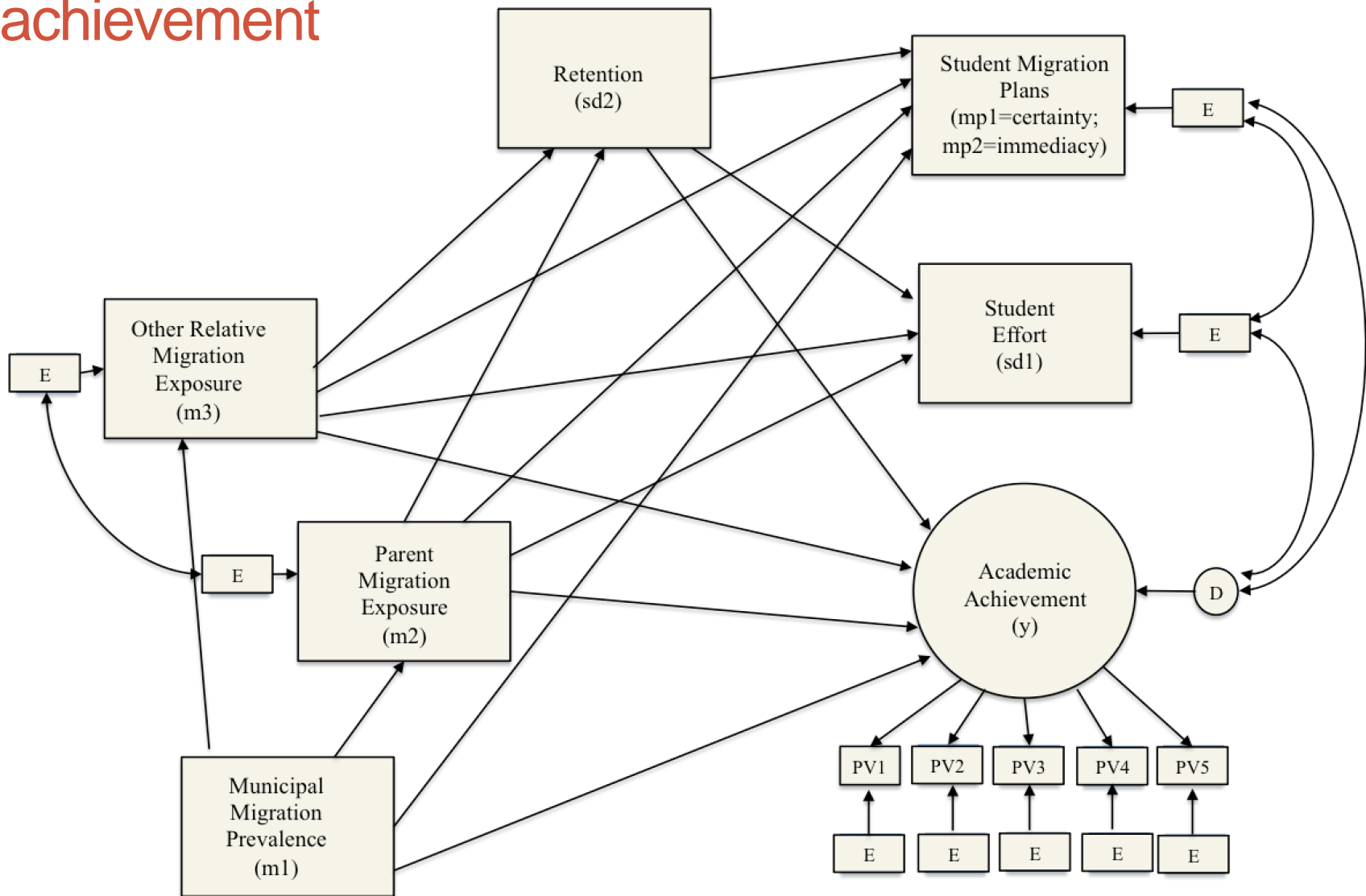
Simposio Binacional

“The students we share/ Los estudiantes que compartimos”

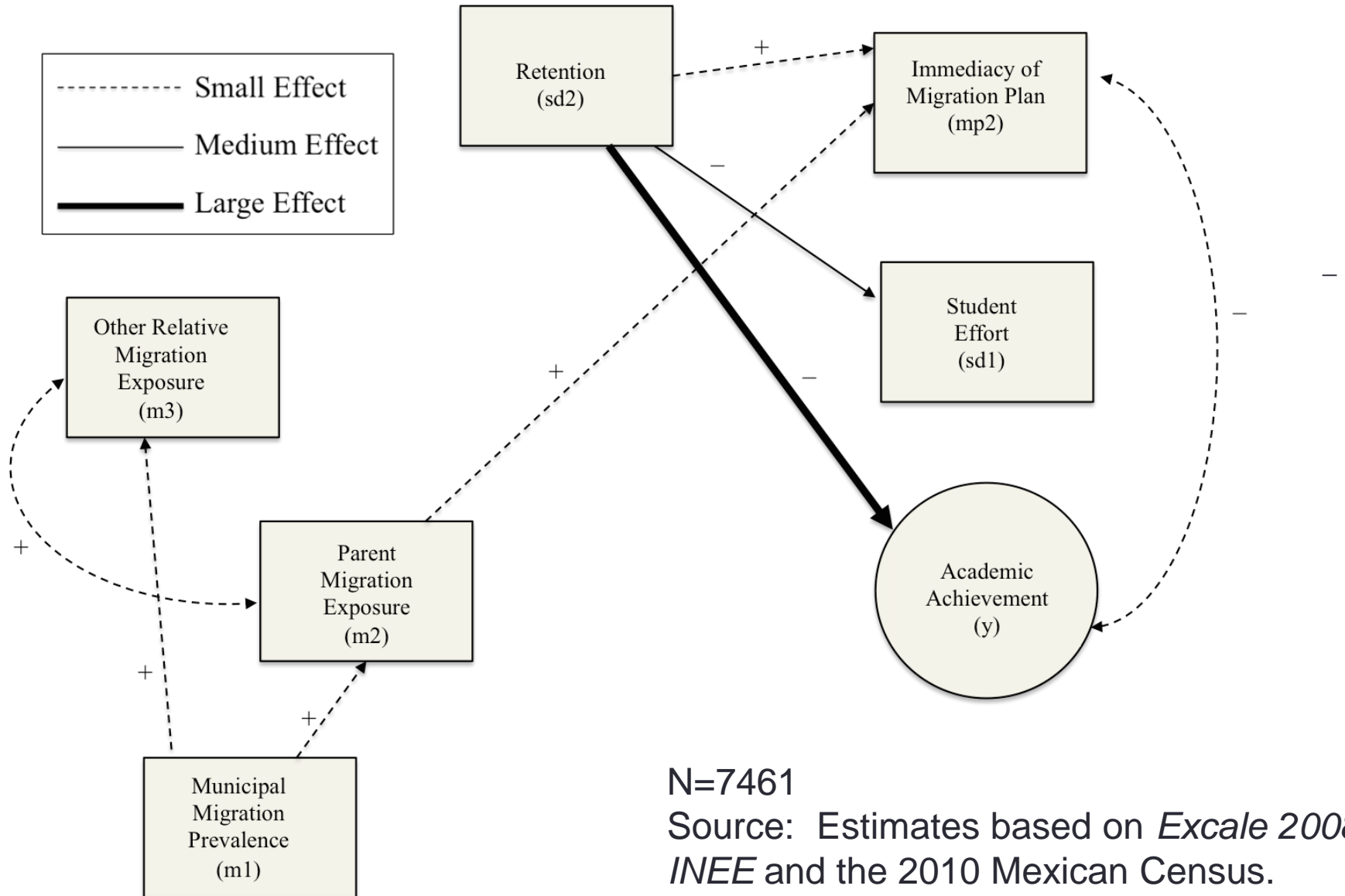
Ciudad de México, septiembre de 2016



Overall path model of migration effects on students achievement

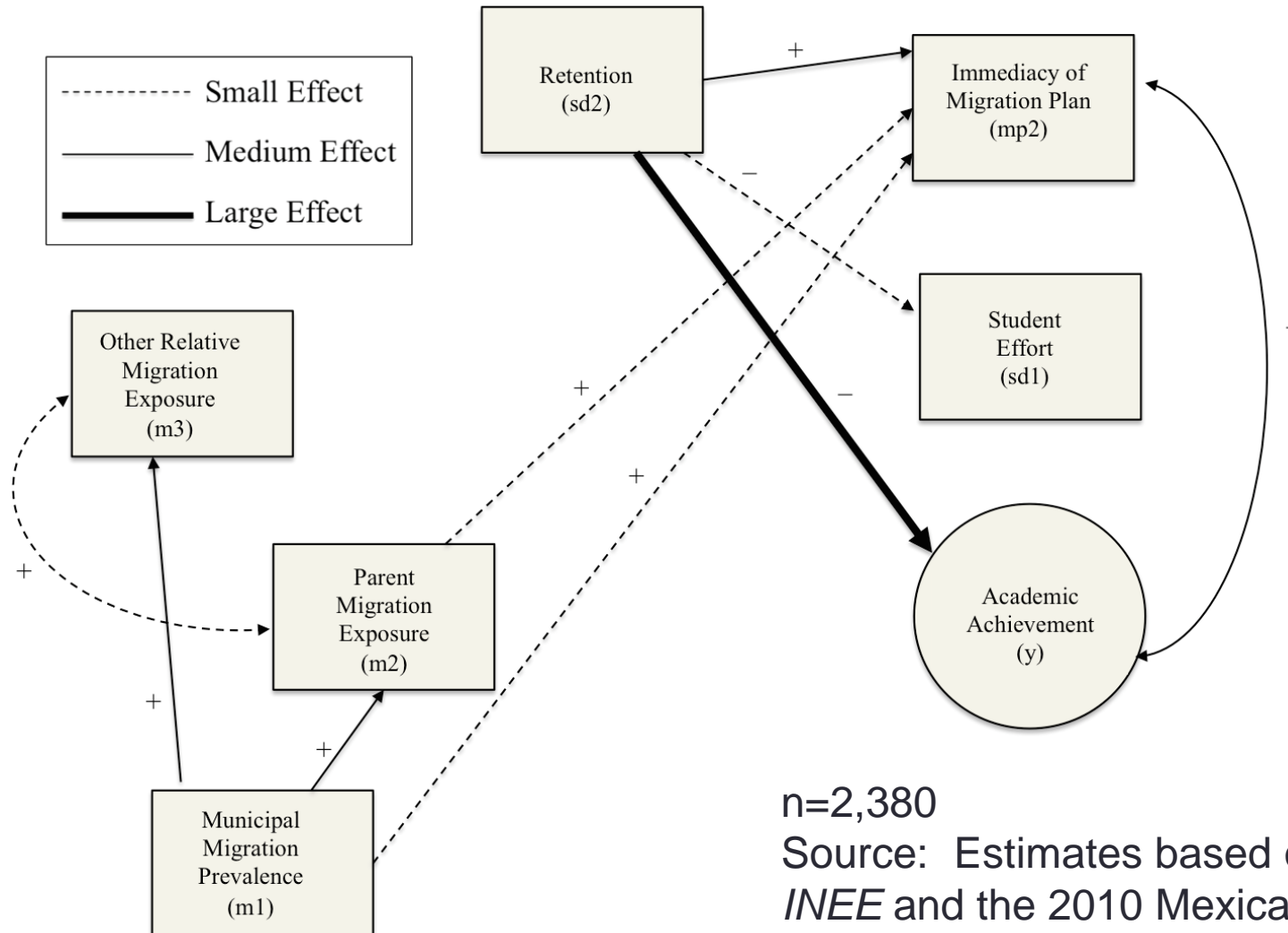


Results: Overall path model of migration effects on students achievement- students considering migrating



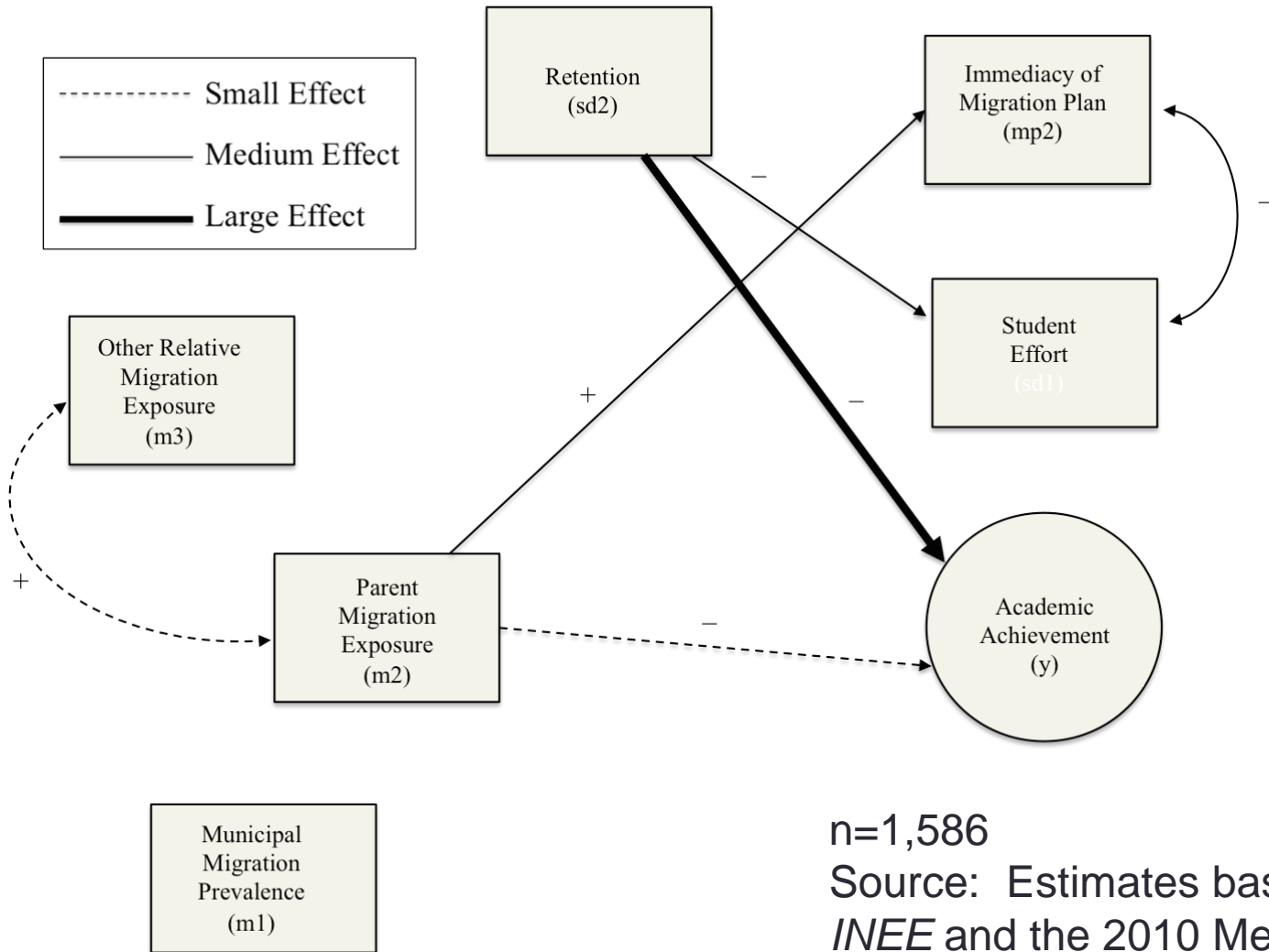
Results: Path model of migration effects on students achievement. Students considering migration

Low SES



Results: Path model of migration effects on students achievement. Students considering migration

High SES



n=1,586

Source: Estimates based on *Excale 2008*, *INEE* and the 2010 Mexican Census.

THANK YOU GRACIAS

Silvia E. Giorguli, sgiorguli@colmex.mx

Bryant Jensen, Bryant_Jensen@byu.edu